

LEGACY PUBLIC SCHOOL

EBULLETIN

Date: Nov 9th, 2018

Principal: Shelley Jones
School Email: legacy.ps@yrdsb.ca

Vice Principal: Leeanne Hoover-Joy
Phone: 905-472-4764

every student counts survey

Nov 12th -Nov 30th

York Region District School Board (YRDSB) is inviting all parents of students in Kindergarten to Grade 12 to complete this system-wide census entitled the Every Student Counts Survey (ESCS).

Kindergarten to grade 6 students are asked to complete the survey with a parent. Parent includes a guardian or caregiver with the significant or primary responsibility for the child. Grades 7 and 8 students will be invited to complete the survey at school.

The purpose of the survey is to better understand our students and their experiences in school and outside of school. The overall findings will be used to help improve our schools and to:

Identify and eliminate systemic barriers to student success:

Create more equitable and inclusive school environments: and

Improve student achievement and well-being.

Look for survey information to come home in the upcoming weeks.

PARENT TEACHER INTERVIEWS

November 22nd -23rd

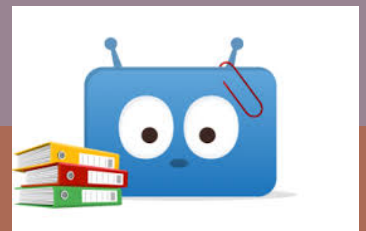
Parent-Teacher interviews for students in SK (Kindergarten Year 2) to grade 8 will be scheduled on Thursday November 22nd in the evening and on Friday November 23rd in the morning. Each interview will be 15 minutes in length with your child's homeroom teacher. Parents of JK (Kindergarten Year 1) students will receive information for an Observation time shortly.

Legacy PS will be using EDSBY for online scheduling of Parent-Teacher Interviews the week of November 12th

EDSBY

All families should have received an email with information on how to activate your EDSBY account. Please check your inbox for an email about EDSBY. The link below has important information on how to activate your account, what to do if you have forgotten your password and how to download the app for your mobile device.

www.edsby.com/help/parents



KEY DATES

Nov 12th-30th-Every Student Counts Survey

Nov 19th- Photo Retake Day (morning)

Nov 21st-Progress Reports Go Home

Nov 20th-23rd- Legacy BOOK FAIR

Nov 22nd-23rd- Parent -Teacher Interviews

Please check our Calendar at:

<http://bit.ly/2DdPcaJ>



SKI CLUB

Legacy staff are looking into running a ski/snowboard club once again this year at Lakeridge. We rely on parent volunteers to support our students wishing to be part of this activity which will run on Wednesdays from 4:00-8:00 pm. (specific dates are not yet determined)

If you are interested in being a volunteer for our ski trip, please contact our school office as soon as possible.



SUB LUNCHES

Look for information about Sub Lunch orders to come home next week!

WE REMEMBER...



Students and staff took time on Friday to recognize the men and women who fought for the many rights and freedoms we have today.

We observed a moment of silence to remember the sacrifices made and the lost lives in the wars across our world. We are grateful for the peace and privileges we have in Canada.

REMEMBRANCE DAY: the 11th day of the 11th month at the 11th hour

TAKE TIME TO REMEMBER



WHAT IS GOING ON OUTSIDE OF CLASS

Cross Country

ECO Club

Volleyball

Me to We

Student Council

Lunch Buddies

Kindergarten Helpers

Wacky Snack

Table Games Club

Library Helpers

Flag Football

Stacking Club

Chess Club



Welcome to Edsby

York Region District School Board has partnered with Edsby to provide a secure platform for families to connect with what's happening at school and with your child's education.

Edsby offers many different features that YRDSB will be rolling out over the next several years. Some of these features include:

- Absence reporting
- A news river with school events and information
- Appointment bookings for Parent-Teacher Interviews/Student-Led Conferences
- Program registration
- Extra-curricular Groups and Activities
- Access to your child's schedule and upcoming events.

Our school will communicate more information as features become available.

For Edsby to be effective, it contains personal information about you and your family that is collected by the Board at registration. This information is used to provide services and support to you and your family. Edsby has been designed as a secure system that protects the privacy of this information for our families.

Setting up your Edsby Account for the first time

An email from York Region District School Board would have been sent to you with instructions on how to create an Edsby account. Make sure the school office has your **current email address on file.**

If you do not see the email, please check your junk mail folder to ensure you do not miss this opportunity.

1. Click the link in the email. The browser will send you to a screen like the one on the right.
2. Click the "I don't have an Edsby parent account" button. **Your username will be your email address. You will choose your password.** Similar to a banking password, it is important to choose a strong password. Please do not share your password.
3. Click "Create Edsby Account." A "Welcome to Edsby" message will be sent to your email address.

For questions about your Edsby account, please contact your child's school

**More Mobile?
Download the Edsby App**



Frequently Asked Questions

What can I do if I do not see the invitation in my email inbox?

Check your junk mail and/or mail settings for an email issued from YRDSB. Your email address on file at your child's school must match the email address for Edsby. If they do not match, contact your child's school to update your email address and reissue an invitation. Updates to email addresses for using Edsby take 24 hours.

What if I accidentally decline the invitation from my child's school?

You will need to contact your child's school so they may issue a new invitation to your email address.

What do I do if I forgot my password?

Go to the Edsby login page (<http://yrdsb.edsby.com>), then click "Can't log in" at the bottom of the page. You will be prompted to enter your username (full email address on file). A temporary password will be sent to your email address and you will be asked to create a new password.

What do I do if I forget my login information?

Your Edsby username is your full email address that you provided to your child's school. If you forgot your username or changed your username, you will need to contact your child's school to verify the email address on file. Updates to email addresses for Edsby logins will take at least 24 hours.

Why does my Edsby account not show correctly on my screen?

Make sure to enable cookies and JavaScript on your browser (consult the help section of your browser). Edsby supports Google Chrome, Apple Safari, Mozilla Firefox, and Internet Explorer (IE 10 or higher).

How do I sign in using the Edsby App?

Download the Edsby app for your mobile device. Open the app. Enter "yrdsb" for your server address when asked. Then enter your Edsby username (full email address) and password.

Why can I not see my other child(ren) or messages from their school(s)?

If you have children at other schools, you will receive a separate invitation for those students. When you select the link in the email, you will select "I have an Edsby account" and enter your login and password. Your children will be added to your account. As long as you are using the same email address, your children should all appear. If you do not see a child in your Edsby account, please contact the school of that child.

